

# FOUNDATIONS OF ACADEMIC WRITING

## Presenters



### **Dr. Sandra Leavitt**

Director of the Graduate Writing Center and Thesis Processing Office, Sandi joined the NPS faculty in 2009 as a research assistant professor and executive director of the Center on Contemporary Conflict in the Department of National Security Affairs, where she taught Comparative Politics and Political and Ethnic Violence in Southeast Asia. Her current research focuses on policymaking related to the ethical use of generative AI to enhance critical thinking. She received her bachelor's in communication from Oregon State University, her master's in Southeast Asia studies from Johns Hopkins University, and PhD in government from Georgetown University.



### **Aileen Houston**

Deputy director of the Graduate Writing Center, Aileen has also been a writing instructor, thesis processor, and attribution lead at NPS. She has twenty years of experience in periodical and academic publishing, including as a copyeditor for the Modern Language Association (MLA). She holds a BA in theatre and creative writing from Washington College and an MA in rhetoric, writing, and digital media studies from Northern Arizona University, where her research focused on academic integrity.



### **Dr. Kate Egerton (contractor)**

Kate is a senior writing instructor for the Graduate Writing Center, and a writing instructor in the Departments of National Security Affairs and Defense Analysis. She has taught college-level English for over twenty-five years, most recently at Berea College in Berea, Kentucky, and also at Duke University, the University of Notre Dame, and Indiana University South Bend. Kate earned her BA in English and Scandinavian studies at Luther College and her MA and PhD in English at the University of North Carolina at Chapel Hill. As a writing instructor, Kate particularly enjoys helping NPS students get published, enabling their work to reach wider audiences.



### **Bryan Hudgens (Lt Colonel, Retired, US Air Force)**

Bryan is the chair of the NPS Institutional Review Board, which oversees research involving human subjects, and a senior lecturer in the Department of Defense Management, where he has also served as assistant department chair and an academic associate for several curricula. He has a BA in mathematics from the University of Pennsylvania and an MS in contract management from the Air Force Institute of Technology. Bryan has been in academia for two decades, mostly at NPS, and has presented and published scholarly research in peer-reviewed academic journals and conferences.



# Graduate Writing Center

Writing instruction and resources for NPS



ONE-TO-ONE

## Writing Instruction

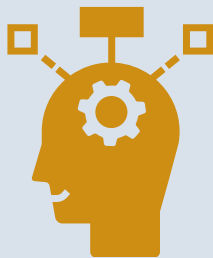
7 DAYS A WEEK



DEDICATED TIME TO WRITE

## Write-ins

FRIDAYS 10:00-14:30



RESEARCH & WRITING

## Workshops

LIVE SESSIONS EVERY TERM



EXTENSIVE

## Online Resources

AVAILABLE 24/7



Dudley Knox Library, 1st floor



831-656-3682



[nps.edu/gwc](https://nps.edu/gwc)



[writingcenter@nps.edu](mailto:writingcenter@nps.edu)



DUDLEY KNOX LIBRARY

# WRITING & RESEARCH WORKSHOPS

SPRING 2025

## GET UP TO SPEED!

Library and writing center workshops give you practice with academic writing, research, and other grad school skills, especially if you are rusty.



LEARN MORE:

[nps.edu/web/gwc/live-workshops](https://nps.edu/web/gwc/live-workshops)

*Research Quick Start*

*Generative AI*

*What (Nearly) Every  
Paper Needs*

*Note-Taking and Time  
Management*

*Strong Sentences*

*Citations with Zotero*

*Strategic Reading*

*Clarity & Concision*

*Writing Persuasively*

*Thesis Quick Start*

*Literature Review*

*Active Voice*

*Paraphrasing &  
Quoting*

*Punctuation*

*Revising*

*LaTeX*



# Spring AY2025 Workshops

## Graduate Writing Center and Dudley Knox Library

Registration is required for each session via [WCONLINE](https://nps.edu/gwc)

All times shown are Pacific



**LOCATIONS:** Find building and room numbers for on-campus sessions below

**ZOOM LOGINS:** Logins and passwords for Zoom sessions are available [online](https://nps.edu/gwc)

### April – May 2025

Monday	Tuesday	Wednesday	Thursday	Friday	Saturday
31	1	2	3	4	5
			12:30 What Every Paper Needs, <i>DKL 151</i>	10:30 Strategic Reading I, <i>GL 115</i>	
7	8	9	10	11	12
	12:00 Research Quick Start, <i>Zoom</i> Thesis Prep, <i>DKL Design Space</i> 15:00 Strategic Reading I, <i>DKL 151</i>	10:00 Writing Persuasively, <i>Zoom</i> 12:00 Thesis Quick Start, <i>Zoom</i> 18:00 LaTeX, <i>Zoom</i>	10:00 Clarity and Concision, <i>DKL 151</i>	10:00 Zotero, <i>Zoom</i> What Every Paper Needs, <i>Zoom</i> 12:00 Generative AI, <i>Zoom</i>	
14	15	16	17	18	19
12:00 Note-Taking and Time Management, <i>DKL 151</i>	12:00 Thesis Quick Start, <i>Zoom</i> Thesis Prep, <i>DKL Design Space</i> 15:00 Strategic Reading I, <i>Zoom</i>	12:00 Research Quick Start, <i>Zoom</i> 15:00 Strategic Reading II, <i>DKL 151</i>			
21	22	23	24	25	26
	12:00 Lit Review, <i>DKL 151</i> Thesis Prep, <i>DKL Design Space</i> 15:00 Strong Sentences, <i>DKL 151</i>	10:00 Active Voice, <i>Zoom</i>	10:00 Strategic Reading for STEM, <i>DKL 151</i>	10:00 Zotero, <i>Zoom</i> Punctuation, <i>Zoom</i> 12:00 Clarity and Concision, <i>Zoom</i>	11:00 Paraphrasing and Quoting, <i>Zoom</i>
28	29	30	1 May	9 May	
	12:00 Revision, <i>Zoom</i> Thesis Prep, <i>DKL Design Space</i> <i>Continues weekly through June 3</i>			10:00 Revision, <i>Zoom</i>	

Registration is required for each session via [WCONLINE](https://nps.edu/gwc)

Find Zoom logins on the [GWC website](https://nps.edu/gwc)

Want more info? <https://nps.edu/gwc>

Questions? [writingcenter@nps.edu](mailto:writingcenter@nps.edu)

9:00am

10:00am

11:00am

12:00pm

1:00pm



**GRADUATE WRITING CENTER**

# **SIGN UP THROUGH WCONLINE**

**<https://nps.edu/web/gwc/wconline-redirect>**



*For easy access to  
WCONLINE, click the  
purple pen icon at  
[nps.edu/gwc](https://nps.edu/gwc)*

## **TO MEET WITH A WRITING INSTRUCTOR:**

Use the live and asynchronous  
appointment schedules

## **TO REGISTER FOR WORKSHOPS:**

Use the workshops  
schedule



Thinking of doing

# HUMAN SUBJECTS RESEARCH?

Using surveys, interviews, questionnaires, focus groups, and data about people, for instance, might lead to human subjects research.



## TALK TO THE IRB FIRST!

You must get approval from the Institutional Review Board (IRB).

Contact the IRB:



[nps.edu/web/research/irb-home](https://nps.edu/web/research/irb-home)



[irb@nps.edu](mailto:irb@nps.edu)